



Winter 2021 [www.luddington.org](http://www.luddington.org)



# Luddington News



**Don't miss...**

## December

### Coffee Mornings

Wed 1, 8, 15 & 22 Dec

10am-12noon @ Village Hall

Cake donations please!

### Christmas Quiz Night

Sat 4 Dec

From 7pm @ Village Hall

Christmas platter included in your ticket price

### Christingle Service

Sun 12 Dec

3.30pm @ All Saints' Church

fund raiser for the Children's Society

### Mobile Library

Wed 15 Dec

11am for 30mins @ Village Hall

### Christmas Coffee Morning

Wed 15 Dec

10am-12noon @ Village Hall  
with Bring and Buy Sale in aid of  
Zoë's Place Baby Hospice

### Christmas Carol Service

Sun 19 Dec

3.45pm @ All Saints' Church

### Carols on the Green

Christmas Eve

7.45pm @ Village Green

### Christmas Day Service

9.30am @ All Saints' Church



Cake Coffee Mornings

UPDATE | from your Village Hall Committee

## It's all go at the Village Hall!

**In October, we held our AGM and reflected on an unusual and challenging year. The full Chairs' report and financial summary can be found on the [luddington.org](http://luddington.org) website or on the Parish noticeboard. Thank you to everyone who has volunteered, supported, attended and donated in the past year: your involvement is what makes the Village Hall.**

Halloween saw a fantastically well-attended Ludflicks and All Saints Pub evening at the Hall. Spooky decorations and crafts and a family film was followed by Wii games on the big screen and a fully stocked bar. Thanks to everyone who came and everyone who organised – it was lovely to see so many of you there.

Our first Quiz Night since covid hit was also a great event, with seven teams competing for glory. Thanks to Karen and Dave for creating the quiz and congratulations to our winning team: Nicky, James, Steve,

Helen, Phil and Kerry! The next quiz night is on Saturday 4th December and has a Christmas theme. £8pp, teams of six, includes a delicious Christmas platter for every table. Book yours now – they are going fast.

Wednesday Coffee Mornings are becoming well-established with 10-15 people attending most weeks. Here's what a few of those who have come along said:

*“We have found the coffee mornings a wonderful way to meet new people and get to know the neighbours.”*

*“I've met more people from the local area at the coffee mornings than I've met from several years of living here!”*

Continued on page four...

## QUIZ NIGHT

Sat 4 Dec

7pm @ Village Hall  
£8pp inc. Xmas platter

Teams of six - max of 10 teams  
(due to capacity)

PRIZE for winning team + RAFFLE

Book and pre-order food:  
[luddingtonvh@gmail.com](mailto:luddingtonvh@gmail.com)  
or 07803 575090



# Carols on the Village Green

Organised by The Village Fund



## This much-loved way to start Christmas is back.

Luddington Village Fund are pleased to announce that Christmas will be back to its best this year as we will be starting the festivities with **Carols on the Green** with Shipston Town Band and mulled wine.

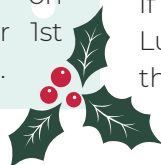
Please come along for a 7.45pm start on Christmas Eve to join friends, family and neighbours for our traditional and fun way to get into the Christmas spirit.

Look out for the carol sheets that will be delivered nearer the big day and will be available at [luddington.org](http://luddington.org).



## Deck the Hall!

Your **Village Hall** is after donations of good quality unwanted Christmas decorations eg tinsel, baubles, tree etc that you no longer require. This will help bring cheer to the hall and all our visitors. Please drop in any donations during the Coffee Morning on Wednesday December 1st between 10 and 12noon.



ALL SAINTS' NEWS | by Jane Beeley

# All Saints' Church News



Autumn Harvest Festival

Thank you to all who made our **Harvest Festival** such a success. The church was beautifully decorated by the Flower Team and after a lovely service with members of Holy Trinity Choir, refreshments were provided in the warm and sunny churchyard. Items were brought and donated to the Food Bank.

We also enjoyed a **Halloween Pub Night** following the film provided by Ludflicks – a great family evening.

Christmas is next on the agenda. There will be services at 9.30am on 28th November and 12th December. There will also be a **Christingle** Service on 12th December at 3.30pm with a collection for the Children's Society. This is a service which is enjoyed by everyone, and children are particularly encouraged to take part so please come along. If you have children living in Luddington who are younger than secondary school age

please let us know as they are entitled thanks to a gift to All Saints' to receive a book token at this service.

The Christmas **Carol Service** will be held at All Saints' on Sunday 19th December at 3.45pm. Members of Holy Trinity Choir will join us again and it is always a wonderful service. There will also be a service on Christmas Day at 9.30am.

Next year, as well as the **Queen's Jubilee**, in May it is the **150th Anniversary** of the consecration of All Saints' and plans for celebrations are being made.

**If anyone would like any information about services or future events please contact Jane Beeley on 01789 269618, or email [peterandjanebeeley@gmail.com](mailto:peterandjanebeeley@gmail.com)**



Oct Halloween Celebration

# Climate Matters

**In recent weeks our attention has been drawn to the Earthshot Awards, COP26 summit and the latest IPCC Climate Report. The rise in global temperatures from CO<sub>2</sub> and greenhouse gases is predicted to hit hard and 10 years earlier than the last assessment in 2018.**



Going green Bridle Meadows

The Parish Council declared a Climate Emergency in October 2020 and set up a Working Group to plan local actions. Progress has been made through the Greenshoots Fund and footpath improvements but we know this is not enough and we must accelerate our efforts.

It can be difficult to see how such big global challenges can be addressed in a rural Parish

like ours but with over 50% of needed emissions reductions coming from local and individual decisions, there are in fact plenty of things we can do.

Bridle Meadows for example offers a fantastic opportunity for wildflowers, hedgerow and tree planting to protect and restore nature whilst offsetting the levels of CO<sub>2</sub> in our air. We will be able to enjoy the open space it creates from the start but the real benefit will be for future generations as it will make an important local contribution to countering climate change.

Our own actions in saving energy, limiting waste and reducing unnecessary road and air travel can also make a significant and immediate personal impact.

Changing behaviours is a long term and complex issue which is why we are looking for support from the community to join the Working Group. If you and your children are interested in the Climate Emergency and want to help with ideas for positive and achievable community solutions, please drop a line to Rachael our Parish Clerk: [luddingtonparishclerk@gmail.com](mailto:luddingtonparishclerk@gmail.com)

**Thanks for your support**

## New green shoots hedgerow

We have received a grant from WCC to plant a new hedge along the Parish land by the Church. Planting will take place in early December and the hedge will be a mixture of native species: field maple, hazel, hawthorn, blackthorn, rose and crab apple. Extra wire will be added to the existing fence to protect the hedge from any pesky nibbling sheep. Following feedback from a few local residents it has been decided to plant the three Rowan trees (Mountain Ash) within the hedge rather than on the Village Green where previously planned.



Old Difficult to climb over

## Out with the old, in with the new!

The difficult footbridge has finally been modified and replaced by two new easy access kissing gates on the riverside path. Our many thanks to resident Colin Robberts of the village for taking up the case with great persistence and getting this result. It may have taken well over 6 months but it's been worth the wait. Thank you Colin: great job!



New The new arrangement

## New road markings

Thanks to Warwickshire County Highways for renewing the road markings on Luddington Road following a request by the Parish Council.

Hopefully the new white lines are helping drivers navigate hazards and bends safely, especially in these darker winter nights.

Contact the Parish Clerk

Rachael Anstey by email:[luddingtonparishclerk@gmail.com](mailto:luddingtonparishclerk@gmail.com) or visit [www.luddingtonpc.org](http://www.luddingtonpc.org)

# It's all go at the Village Hall!

Continued from page one...

(Plus the cakes are delicious). We could do with a few more cake donations so please let Penny know if you can bake or donate once in a while on [luddingtonvh@gmail.com](mailto:luddingtonvh@gmail.com).

If you can volunteer to host now and then (involves making cups of tea and chatting), please also let us know!



## Recent upgrades and plans:

A microwave is now available in the Hall kitchen and WiFi will be installed any day now (another excuse to pop up to the Coffee Morning instead of working from home?). We are finalising plans to refresh the décor and furniture which we hope to share soon.

## Do you have any photos of Luddington over the years?

As part of our plans to redecorate the Hall, we are looking for any old photos of the village or Parish over the years – including any from more recent times – as well as any stories or memorabilia. If you have anything in a shoebox you can share, please email us at [luddingtonvh@gmail.com](mailto:luddingtonvh@gmail.com) or pop into a Coffee Morning.



## FILM NIGHT

Last Saturday of the month  
Join Ludflicks

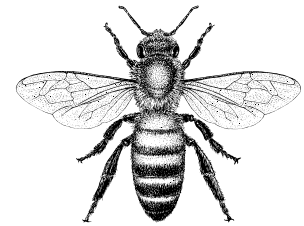
Bring your own drinks and nibbles and join us for movie time. Ludflicks club restarts 29 January. Ludflicks membership is £10 per year (£25 for a family) but you can try it for free!

VILLAGE HALL | Hearing from our Hirers

We asked our regular hirers to tell us a little about what they offer: do give them a try! We'll feature some in each edition...



**CB Yoga** classes have started again on Tuesday mornings 10-11.30am. Catherine Phillips is a British Wheel of Yoga trained yoga teacher who teaches Hatha Yoga to all abilities including the postures, breath awareness and relaxation. The class is totally inclusive. If you are interested in joining us, email [phillipsclatherine179@gmail.com](mailto:phillipsclatherine179@gmail.com).



## Stratford Beekeepers' Taster Day

Are you interested in Beekeeping but not sure what is involved? Why not join our Taster Day at Luddington Village Hall on Saturday 29 January 2022 10am-4pm, an informal and low cost opportunity to find out more. £20 including light refreshments. [www.stratfordbeekeepers.org.uk](http://www.stratfordbeekeepers.org.uk)

LUDDINGTON PARISH COUNCIL NEWS | by Councillor Stuart Keighley, Chairman

## Tragedy as killer bird flu strikes

You will probably have read about the serious impact on the Swans and other Waterfowl which are especially vulnerable to bird flu. It is very contagious and most often lethal with birds suffering terribly as they die. It has now been found in a poultry farm in Alcester. Posters have been put up on the footpath gates advising people what to do so please be vigilant. Thanks.



## Growing the Forest in Luddington Parish



The Heart of England Forest has acquired land in Luddington and Binton Parishes and will be creating a diverse and accessible space for people of all ages and backgrounds to enjoy. This includes establishing a 15 hectare tree nursery on the outskirts of Luddington which will be run as a social enterprise and supply saplings for the Forest.

The planting of the Binton community woodland will start this winter. Luddington planting is planned for the 2022/23 planting season, after a community consultation is undertaken for Binton.

Find out more about the Heart of England Forest including visiting, events, support and volunteering at [www.heartofenglandforest.org](http://www.heartofenglandforest.org)